

Professional Banking VMS for a Big Number of Facilities



3rd December 2018 - Banks need the highest level of security because they have a variety of facilities and valuable articles to attend to, including branch offices, ATMs, cash vaults, cash-in-transit, and cash vans, which tend to scatter wide across a significant area, for example, a nation. GVD, an experienced developer of sophisticated video solutions, had focused on bank-level high-end video products and has introduced the *Central Management Solution* to bankers all over the world. In the following, we will name a few banking features of GVD *Central Management Solution*.

Maps

To ease the complexity of banking security, GVD features *GIS Maps* and *Facility Maps* ("floor plans"). The security operators can efficiently oversee and manage a great number of devices on a nation-wide landscape and quickly respond to an alarm by instantly spotting the relevant device on-map.



GVD GIS Maps



GVD "Facility Maps"

UVV - Kassen

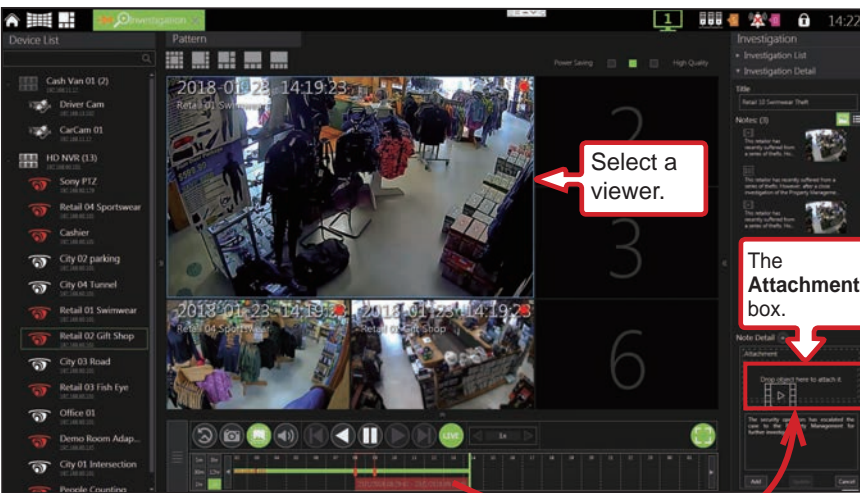
With UVV-Kassen features, GVD NVRs are certified high-quality NVRs for the use in banks and financial institutions. First, GVD NVRs features *Four-eye Principle*, by which an additional "Four-eye Master" is needed to log in for a general user to live-view, retrieve, or export a video. Then, the *Picture Comparison*, clarifies whether a camera is redirected, defocused, covered..., and so on. Next, the *Recycle Protection* keeps alarm video from deletion unless the pre-defined "retention" time expires. Finally, there are 900 seconds for each pre- and post-event video buffer storage. Besides, GVD NVRs have powerful video retrieval and ATM alarms based on ATM transaction data, including transaction time and transaction data keywords and numbers.



UVV Kassen - compliant "Four-eye Principle"

Case Builder

GVD's Central Management Platform features a tool called the *Case Builder* to take a systematic inquiry into a suspicious event on the banking floors. The tool can record each an investigation act with an "Investigation Note", supported by an attached text description, video clip, and/or screenshot, and these notes can further be stored in an "Investigation List", which further forms organized documentation of your investigation on a case. In some worst conditions, the document can provide you with the evidence required for criminal investigation.

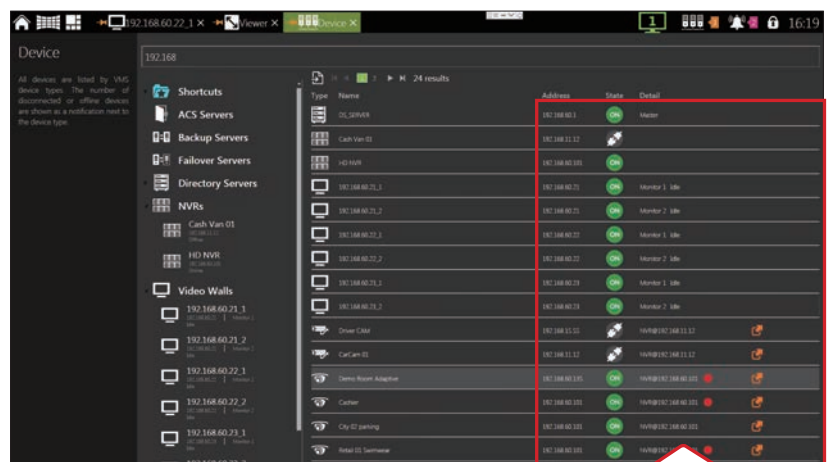


Attach a video clip to an "Investigation Note"

Drag-and-drop

Device Keeper

To lessen the complexity of a large project such as bankings, GVD's Central Management Platform features an innovative "Device Keeper", which continuously detects and promptly adds an available device to the platform and auto-updates its changes of status. Eleven types of devices are supported, including cameras, NVRs, DIO modules, doors, video-wall monitors, directory servers, failover servers, backup servers, and station servers. And, on the GUI, a dedicated "Device" page is to show how many devices are there in the system and how the devices are working at the moment, in an organized and classified way.

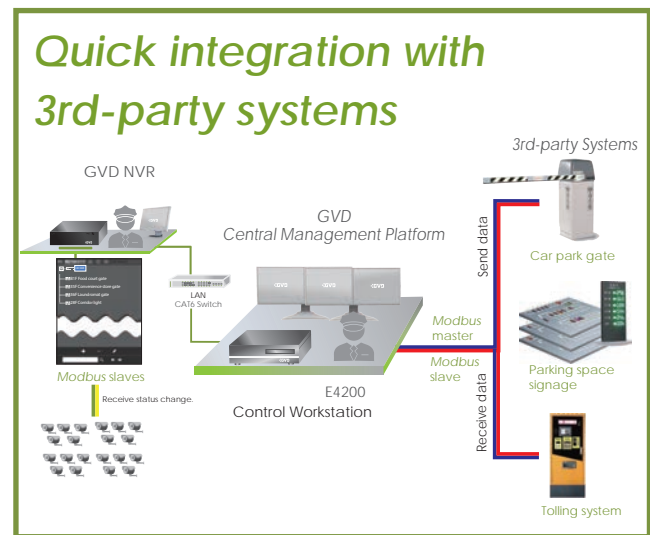


The dedicated "Device" page

The information about a device shows with the query result.

Application Packs

GVD has some application packs to quickly integrate the video system with a 3-party one. There is a bi-monthly released "Device Pack" to support the latest cameras on the market, and there is an "LPR Pack" to read vehicle license plates, and GVD NVRs use *Modbus (slave)*, the currently most popular serial-communication protocol, to collect status data from a video channel, while the *Central Management Platform* has *Modbus master & slave* to send & receive 3rd-party system data. Besides, the open platform design of the *Central Management Platform* also saves much trouble of system integration



The *Central Management Platform* has a management console called *E4200 Control Workstation*, which has a heightened GPU to bring a 50% boost of decoding and triple-monitor display. The security operators can run GIS Maps on one screen while simultaneously viewing live videos and managing alarms on the other two, which dramatically streamlines the work.

The new video-wall decoder, *D4200*, is yet another highlight. Its GPU is equally enhanced as the management console, *E4200*, to feature an exclusive quad-screen display, with 4K resolution on two of them. The decoding ability is equally raised by 50%. H.265 is also available. With GVD video-wall solution, a huge video wall of max. 40 screens to show 1,000 synchronous live videos isn't hard at all.

GVD *Central Management Platform* is optimized for banking business. For more details about the product, please visit:

<http://www.gvddigital.com/web2018/products/vmsvscms.php>

About Genius Vision Digital

Founded in 2007, **Genius Vision Digital** (hereinafter "GVD") has devoted to the development and innovation of some peculiar video applications ranging from large-scale projects and multi-site projects to transportation. After a few years of effort, the Taipei-based company has become a well-known provider of professional HD IP video surveillance and has sales arms set up in New Delhi, India and Dallas, USA



GVD has a professional team with 11-year experience in CCTV and 8-year experience in IP video surveillance, with parallel concentration on analog, hybrid and IP video solutions. **GVD** team has high efficiency in designing and developing large-scale video systems and stands out in Asia with leading technology. For more information about **GVD**, please visit our website at: www.gvddigital.com.

For further information about **Genius Vision Digital**, please contact:
Phone: +886.2.2516.6001; E-mail: sales@gvddigital.com