



Taipei
New Delhi
April, 2007

GVD VMS 5.0 Suites

GVD VMS 5.0. This next-generation evolution of the acclaimed VMS 4.0 platform introduces a suite of high-performance features designed to meet the demands of large-scale enterprise environments, Smart Cities, and high-security government installations.

VMS 5.0 represents a significant leap forward in video management technology, focusing on extreme hardware efficiency, flexible web-based interfaces, and unprecedented scalability.

VMS 5.0 is not just an update; it is a total transformation of how large-scale video data is managed. By doubling camera capacity per server and introducing our Federal Domain architecture, we are providing our clients with the power to scale to 100,000 cameras while maintaining the highest levels of cybersecurity and ease of use.

- Maximize Hardware Efficiency, double IP cams per NVR
- Massive Scalability with Federal Architecture
- New Free Video and eMap layout customization
- IoT & Smart City Integration
- Universal AI Camera/Servers support with virtual channel
- Enterprise-Grade Cybersecurity OWASP Top 10, STCQ, CNS16120, certifications passed or complied



Product Highlights

■ Total Solution with VMS 5.0

GVD VMS Suites is a full spectrum IP surveillance solution, it seamlessly works with other key IP surveillance systems by stacking up your projects: X5 Failover Server, X6 Archive Server, E Series Workstations, D Series VideoWall, Smart phone Apps, cross-platforms Browsers etc.

■ Industrial Server with Auto- Maintenance

The True Enterprise with dual LAN and power redundancy and RAID storage with hot-swappable to tolerate any faults and prevent data loss. M6 also supports VMS ToolSet kits for your important configuration and systems periodically restart automatically. VMS Toolset will show all of important messages from OS and your NVR for any necessary NVR maintenance steps.

■ Dual-Eng NVR Value-Driven Pricing

A powerful NVR recording engine that can handle more IP camera streams on a single NVR machine, no need for Virtual Machine support. Increases total IP cams I/O bitrate by 70% ~ 100%, supports 70% ~ 90% more IP cameras on a single NVR

It helps customers save massive costs on surveillance system installation perfectly for Cloud projects and large enterprises.

■ IoT Seamless Integration

Moving beyond traditional video, VMS 5.0 supports deep IoT integration.

It bridges various sensors and devices, then outputs to provide a unified platform on GVD VMS for SmartBuilding and SmartCity applications.

■ Open Protocols for Integration

GVD VMS supports ONVIF, MQTT, Modbus, JSON, TCP Text, REST popular open protocols widely used in various systems and industrial electronic devices.

These are pre-built in with VMS/NVR, users don't need to invest extra effort and cost to integrate a 3rd-party system.

VMS also features powerful alarm management that is capable of sending TCP messages to alert security operators.

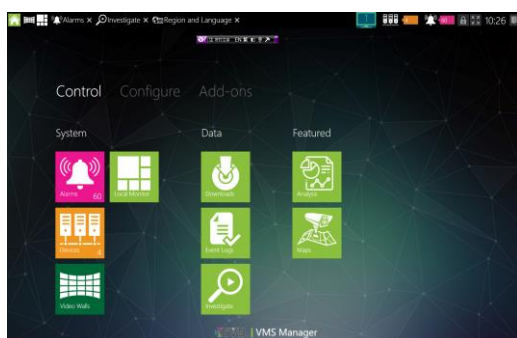
These advantages make GVD VMS highly eligible for many promising solutions such as SmartCity, Green Building, Traffic Control, Automation Production etc

■ AI metadata Search and Time-Sharing

GVD VMS is designed to support quick Ai cameras and Ai Server plug-in solution by ONVIF Profile-M and GVD ready-to-go Ai Agent JSON Interface.

GVD maximizes ROI on expensive AI servers. GVD VMS introduces Time-Sharing modeling.

This innovative feature allows AI Server resources to be distributed across multiple IP cameras on the VMS, significantly enlarging the scope of AI analytics without requiring additional server investment.

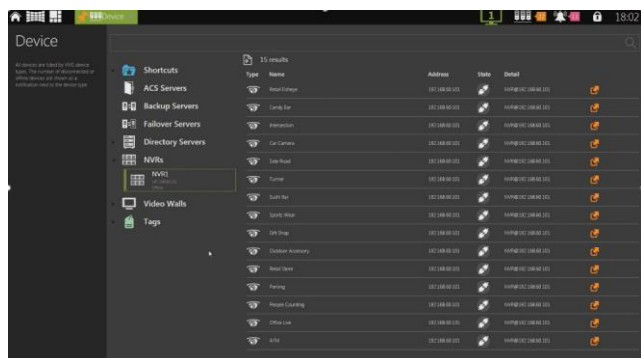




VMS Features

100,000 IP cameras support

GVD E4200 can team up with a variety of NVR models featured by GVD to handle 64~100,000 channels with unique "Device Management" & "Tag Management" functions.



Ai Meta Data Search

The GVD's new AI Smart Search offers powerful integration through a simple, standard JSON-based interface, can easily connect any AI cameras to GVD VMS platform.

The GVD VMS 4.0 AI Data Search GUI features an intuitive, user-friendly design that allows users to get hands-on quickly and efficiently.



Videowall synchronous display

An operator sitting at the management console (E4200) of VMS platform can freely change what to output on the videowall, by using Drag-and-drop to view live-video, play recorded video, change video pattern, start/stop video touring, etc.

iGlance Dashboard

iGlance is to give operators a quick comprehensive view of system status: Alarm, NVR, IP cams, network statistics, video analytics to ensure all operation and future maintenance.

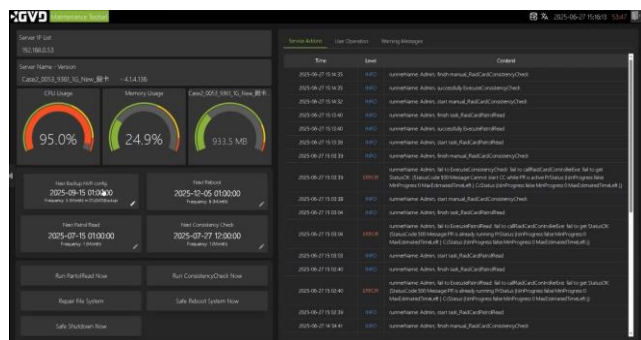


Seamless Video on eMap

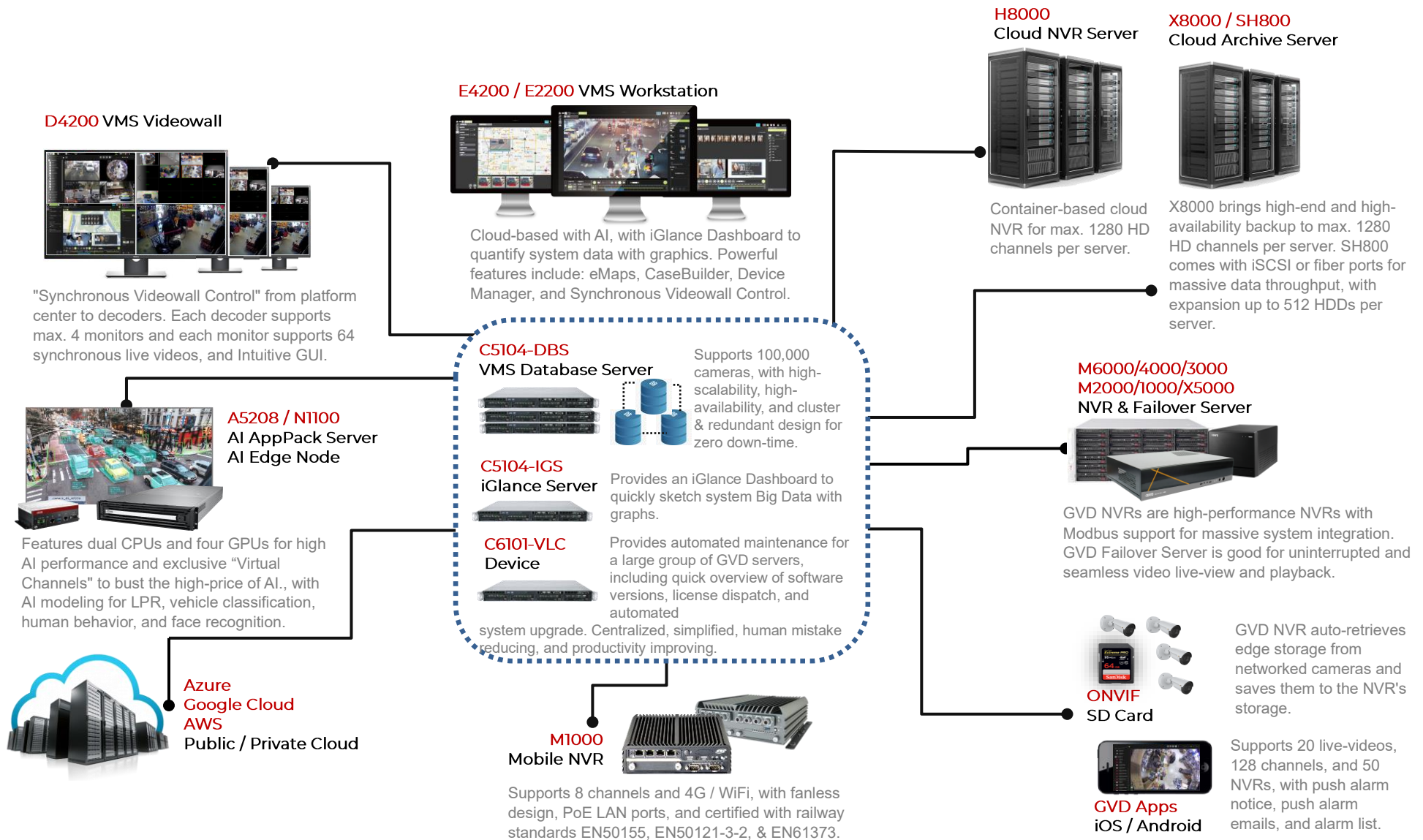
GVD VMS designed for video HA (high availability) to fetch the sources of the video from NVR or the redundant systems such as Failover server. Such HA videos are embedded on GVD eMap for easy and intuitive operation.

Automatic Self Maintenance

VMS 4.0 ToolSet kits for your important configuration and systems periodically restart automatically. VMS Toolset will show all of important messages from OS and your NVR for any necessary NVR maintenance steps.



System Architecture



Specifications

VMS 5.0 Suites Package	VMS Lite Package	VMS Pro Package	VMS Max Package
Turbo NVR Software	▲	▲	▲
Dual-Eng NVR			▲
NVR Expander			▲
VMS Database Server Software		▲	▲
VMS Manager		▲	▲
VMS Conductor	▲	▲	▲
VMS VideoWall		▲	▲
POS, Modbus Support	▲	▲	▲
Failover Server Software		▲	▲
Archive Server Software			▲
iGlance Dashboard			▲
Free Format eMap / Viewer		▲	▲
Apps: Browsers, iOS, Android	▲	▲	▲
Ai Server Time-Sharing		▲	▲
ONVIF Profile-M, Ai JSON Plug-in		▲	▲
Web Docker		▲	▲
IoT Server Integration			▲
Federal Domain			▲
Cloud Support			▲

Specifications

Product	Model	Key Functions	
Turbo NVR Dual-Eng NVR	SW-M6000	Video storage and management Users Permission Manager Vide streaming functions, AVS Converging video export	Cam/NVR/Storage config/setup eMap systems Alarm management Multi-NVR Instance support
VMS Managers	SW-E4200	Cam Tag & video operation Video patterns / viewers Web Docker and Plug-in CaseBuilder	Cam/NVR/Storage config/setup Dev/User Status/Admin eMap, eMap editor iGlance Gateway
VMS Conductor	SW-E2200	Alarm management Video patterns / viewers eMap, eMap editor	Device/User Management Dev Status/Admin
VMS Conductor Lite	SW-E1100	Alarm management Video patterns / viewers eMap, eMap editor	Device Management Dev Status/Admin
VMS Videowall	SW-D4200	Video, Meta sync and management Alarm management	Video patterns / viewers
VMS Database Server	SW-C5000-DBS	Database Manager Dev, Users Permission Manager iGlance Gateway CCTV and Sys logging systems	VMS Bridge Client Storage and failover management Alarm Management LDAP Support
VMS Failover Server	SW-X5000	NxM Failover model Backup Scheduler	Channel based assignment Heartbeat controller
VMS Archive Server	SW-X8000	Channel grouping task assignment Bandwidth-based data traffic control	Load Balancer scheduler
iGlance Server	SW-C5000-IGS	Dataset Distillation NVR Gateway	Database Bridge Link Alarm manager
VMS Bridge	SW-G2000	NVR Expander IoT Integration Gateway Web Docker	Ai JSON Plug-in Modbus Gateway Federal Domain Bridge
VMS ToolSet	SW-G1000	NVR, Workstation, VideoWall, Failover version/license Management Scheduling upgrade SW Upgrade automation	Version control License dispatch
VMS Apps	iOS-App Android-App Browser-App	Live and Playback video Alarm Notice & Popup Video PTZ control	Push Msg Multi-NVR operation